

# REGIONAL TOURISM SATELLITE ACCOUNTS 2016-17

## SOUTHERN GREAT BARRIER REEF REGION KEY FACTS



In 2016-17, the tourism industry contributed an estimated **\$1.2 billion** to the Southern Great Barrier Reef (SGBR) regional economy (4.7% of the SGBR region's gross regional product) and supported around **12,400 jobs** (8.0% of employment in the SGBR region).

### TOURISM GROSS REGIONAL PRODUCT (GRP)

\*GSP indicates Gross State Product



SGBR	Regional QLD <sup>2</sup>	Total QLD (GSP*)
<b>DIRECT</b> <b>\$677.1M</b> ▲ 7.8% 2.6% of SGBR GRP	<b>DIRECT</b> <b>\$8.4 bn</b> ▲ 2.0% 5.2% of Reg. QLD GRP	<b>DIRECT</b> <b>\$12.8 bn</b> ▲ 4.2% 3.9% of QLD GSP
<b>TOTAL</b> <b>\$1.2 bn</b> ▲ 7.7% 4.7% of SGBR GRP	<b>TOTAL</b> <b>\$14.8 bn</b> ▲ 1.5% 9.2% of Reg. QLD GRP	<b>TOTAL<sup>1</sup></b> <b>\$25.4 bn</b> ▲ 3.9% 7.8% of QLD GSP

### GRP/GSP Per Capita



### TOURISM EMPLOYMENT IN THE SGBR REGION

Supporting **12,400 jobs**  
8.0% of SGBR employment

▲ 6.4%  
YoY

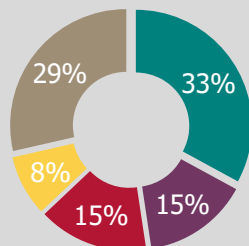


**8,900 direct tourism jobs**  
5.7% of SGBR employment

▲ 5.9%  
YoY

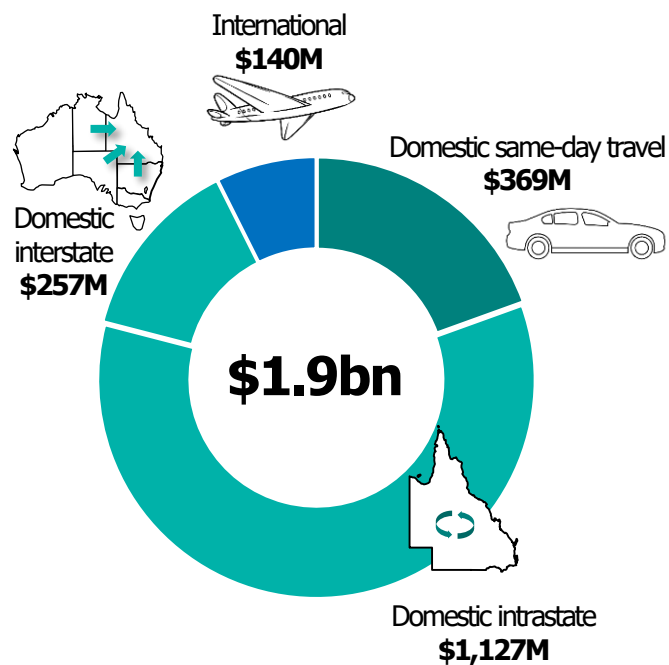
### DIRECT TOURISM EMPLOYMENT BY INDUSTRY

- Food services\*
- Retail trade
- Accommodation
- Travel agency and tour operator
- All other industries



\*Refers to cafes, restaurants & take-away food services

### TOURISM CONSUMPTION IN THE SGBR REGION\*



\*Tourism consumption measures the total value of tourism goods/services consumed by residents/international visitors in Australia

SOURCE: DELOITTE ACCESS ECONOMICS, REGIONAL TOURISM SATELLITE ACCOUNTS 2016/17

Notes: 1. Total impact on the Australian economy of tourism consumption in Queensland

2. Regional Queensland includes all tourism regions outside of Brisbane