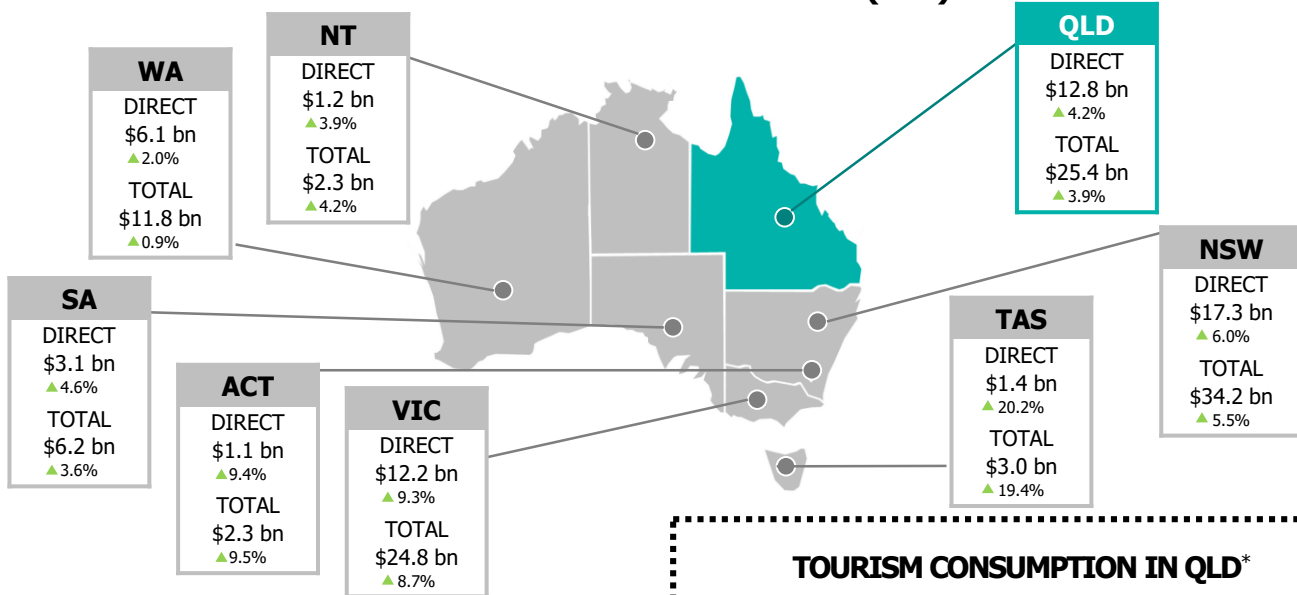




## TOURISM GROSS STATE PRODUCT (GSP)



## TOURISM EMPLOYMENT IN QLD

Total tourism employment in Queensland grew at a faster rate than overall state employment (2.2% vs. 0.6% overall)

**217k**  
▲2.2% YoY

**TOTAL EMPLOYMENT**

**DIRECT EMPLOYMENT**

**138k**  
▲1.4% YoY

**Industry share of total QLD employment**

**Tourism (direct)**

5.8%

**Agriculture, forestry and fishing**

2.2%

**Mining**

2.5%

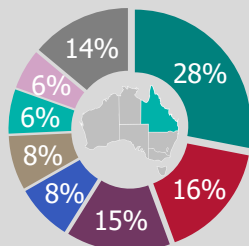
**Financial and insurance services**

2.6%

Queensland's tourism industry employs more people than the agriculture, forestry and fishing and mining industries combined

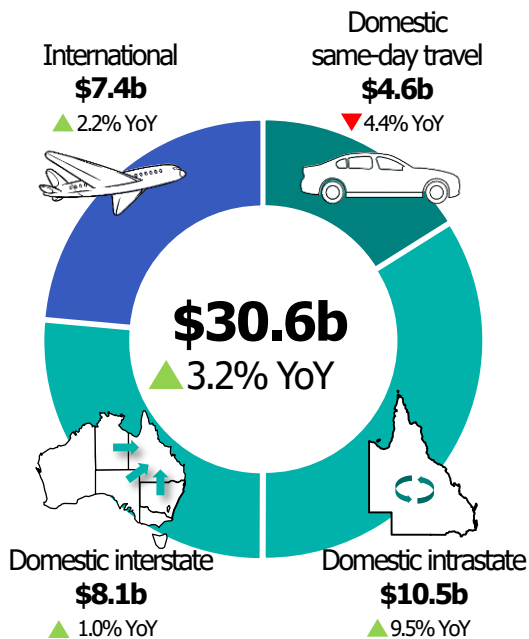
## DIRECT TOURISM EMPLOYMENT BY INDUSTRY

- Food Services\*
- Retail trade
- Accommodation
- Air, water & other transport
- Travel agency / tour operator
- Education & training
- Clubs, pubs, & bars
- Other



\* Refers to cafes, restaurants & take-away food services

## TOURISM CONSUMPTION IN QLD\*



\* Tourism consumption measures the total value of tourism goods/services consumed by residents/international visitors in Australia

## TOURISM GROSS VALUE ADDED\*

\* Gross value added is equal to GSP minus net taxes

	DIRECT		TOTAL	
QLD	\$11.7 bn	▲4.2%	\$22.8 bn	▲4.0%
NSW	\$15.9 bn	▲6.0%	\$30.6 bn	▲5.7%
VIC	\$11.3 bn	▲9.2%	\$22.2 bn	▲9.0%
WA	\$5.6 bn	▲2.0%	\$10.6 bn	▲1.4%
SA	\$2.8 bn	▲4.8%	\$5.6 bn	▲3.9%
TAS	\$1.3 bn	▲20.1%	\$2.7 bn	▲19.7%
NT	\$1.1 bn	▲3.9%	\$2.1 bn	▲4.4%
ACT	\$1.0 bn	▲9.6%	\$1.9 bn	▲9.8%