

REGIONAL TOURISM SATELLITE ACCOUNTS 2019-20

SOUTHERN GREAT BARRIER REEF REGION KEY FACTS



In 2019-20, the tourism industry contributed an estimated **\$1.0 billion** to the Southern Great Barrier Reef (SGBR) regional economy (4.0% of the SGBR region's gross regional product) and supported about **11,000 jobs** (7.2% of employment in the SGBR region).

TOURISM GROSS REGIONAL PRODUCT (GRP)

*GSP indicates Gross State Product



SGBR	Regional QLD ²	Total QLD (GSP*)
DIRECT \$556.4M ▼-19.4% 2.2% of SGBR GRP	DIRECT \$5.0 bn ▼-17.4% 3.7% of Reg. QLD GRP	DIRECT \$11.4 bn ▼-18.1% 3.2% of QLD GSP
TOTAL \$1.0 bn ▼-20.8% 4.0% of SGBR GRP	TOTAL \$8.9 bn ▼-18.8% 6.5% of Reg. QLD GRP	TOTAL¹ \$22.7 bn ▼-20.0% 6.3% of QLD GSP

GRP/GSP Per Capita



TOURISM EMPLOYMENT IN THE SGBR REGION

Supporting 11,000 jobs
7.2% of SGBR employment
1 in 14 jobs

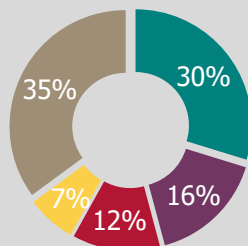
▼-10.9%
YoY



8,100 direct tourism jobs
5.3% of SGBR employment
1 in 19 jobs

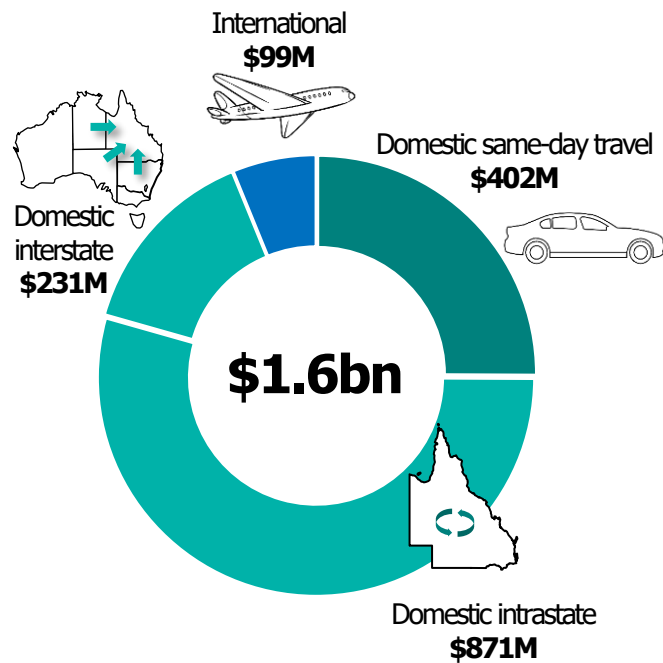
▼-6.5%
YoY

DIRECT TOURISM EMPLOYMENT BY INDUSTRY



** Refers to cafes, restaurants & take-away food services

TOURISM CONSUMPTION IN THE SGBR REGION[#]



[#]Tourism consumption measures the total value of tourism goods/services consumed by residents/international visitors in Australia

SOURCE: TOURISM RESEARCH AUSTRALIA, REGIONAL TOURISM SATELLITE ACCOUNTS 2019-20

Notes: 1. Total impact on the Australian economy of tourism consumption in Queensland
2. Regional Queensland includes all tourism regions outside of Brisbane and the Gold Coast

