

# NORTHERN QUEENSLAND

## SUMMARY OF RESULTS

	2016-17	CHANGE ON 2015-16
<b>TOURISM CONSUMPTION (\$m)</b>		
Total tourism consumption	1,166	▼ -16.3%
<b>TOURISM GRP (\$m)</b>		
Direct	492	▼ -8.9%
Indirect	354	▼ -13.4%
<b>Total tourism GRP</b>	<b>846</b>	<b>▼ -10.8%</b>
Tourism's direct share of GRP (%)	3.5%	
<b>TOURISM GVA (\$m)</b>		
Direct	448	▼ -8.6%
Indirect	314	▼ -13.1%
<b>Total tourism GVA</b>	<b>762</b>	<b>▼ -10.5%</b>
Tourism's direct share of regional GVA (%)	3.4%	
<b>TOURISM EMPLOYMENT (persons)</b>		
Direct	5,838	▼ -12.1%
Indirect	2,242	▼ -13.6%
<b>Total tourism employment</b>	<b>8,080</b>	<b>▼ -12.6%</b>
Tourism's direct share of regional employment (%)	5.1%	

### HOW DO I READ THIS TABLE?

- In 2016-17, *direct* tourism GRP in Northern was worth \$492 million (▼ 8.9% compared to 2015-16). This was 3.5% of the region's total GRP.
- Indirect* tourism GRP was worth an extra \$354 million to the Northern economy
- So, in 2016-17, tourism (both direct and indirect) was worth \$846 million to the Northern economy.**

#### What is **tourism consumption**?

- The total value of goods and services consumed by domestic and international visitors in Australia

#### What is **direct contribution**?

- Money spent directly in the tourism industry – with no tourism industry this money wouldn't be generated, or these people wouldn't be employed.

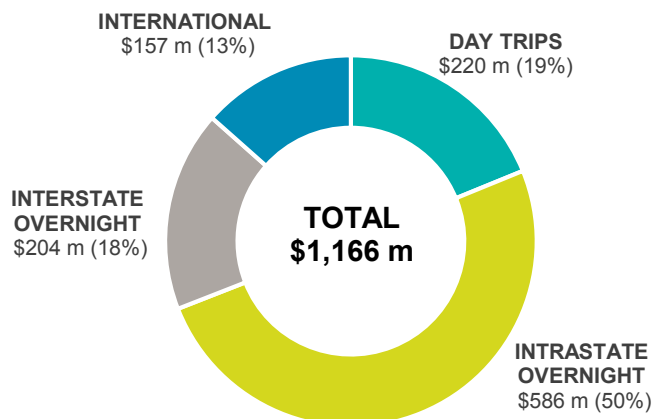
#### What is **indirect contribution**?

- The flow-on effect of the tourism industry. In Northern, every dollar spent in the tourism industry, created additional value elsewhere in the economy.

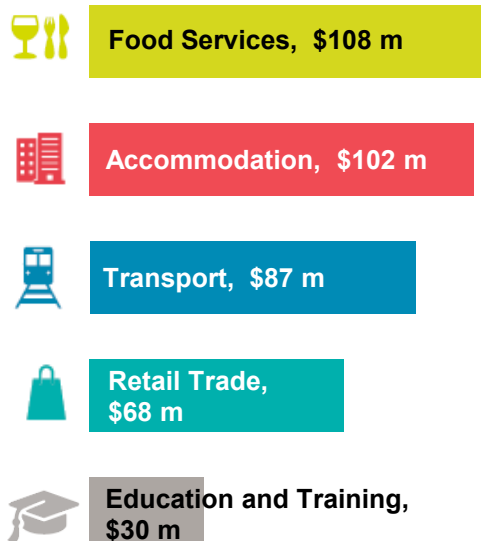
#### Why do we use **GVA**?

- GVA allows easier comparisons across industries. GVA is equal to GRP minus taxes.

## SHARE OF REGIONAL CONSUMPTION



## INDUSTRY SHARE OF DIRECT TOURISM GVA



## TOURISM'S DIRECT CONTRIBUTION TO EMPLOYMENT

	DIRECT
FULL TIME	3,048
PART TIME	2,761